

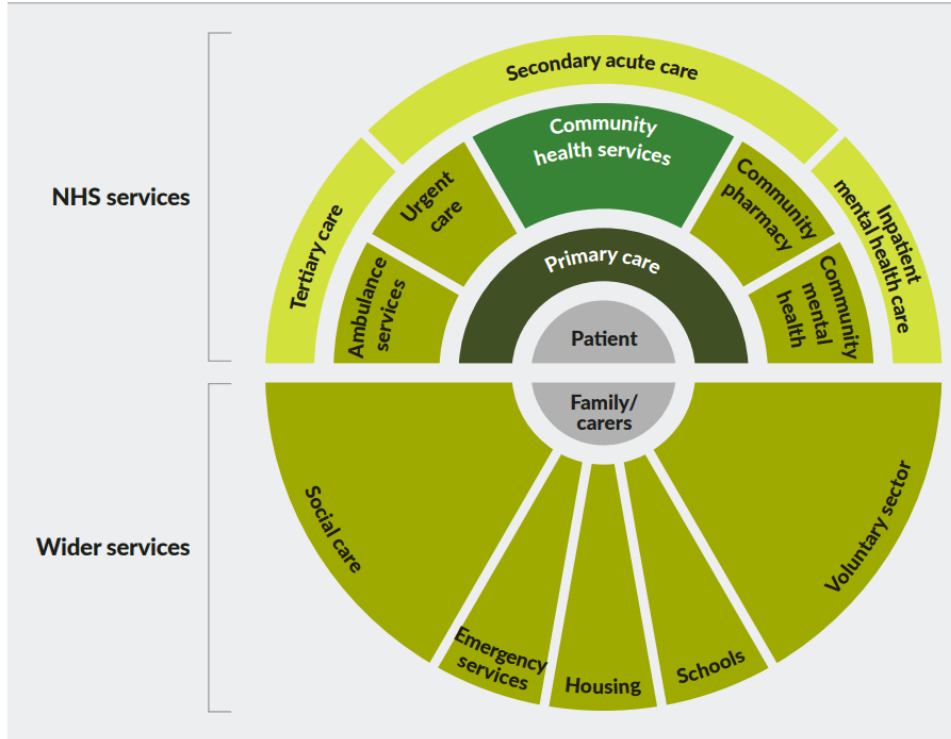
# Networked Data Lab

Jorgen Engmann (Senior Data manager)

September 2020



# Rationale and objectives



- Care is fragmented across services
- Increased aging population and long-term conditions
- Increased diversity in population and inequalities
- Linked data provides fuller picture to inform and support services
- Capitalize on local health record linkages

**OVERALL AIMS:** improve Health & Care service and reduce inequalities

**OBJECTIVES:** Provide investment and support to

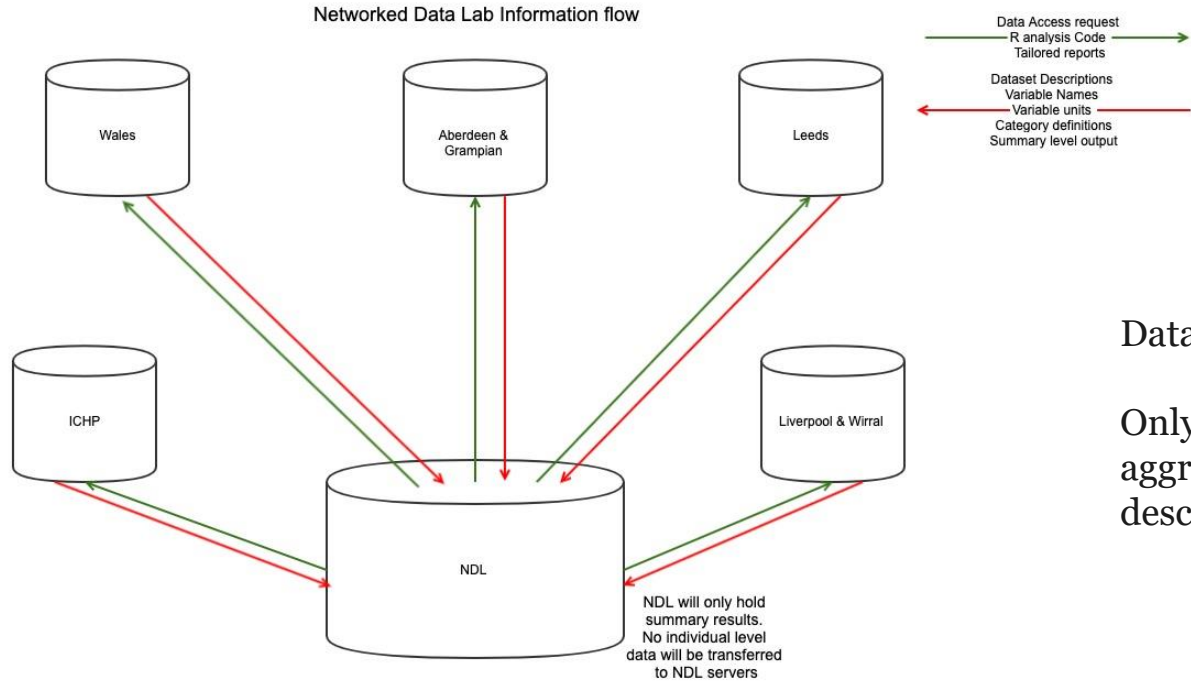
- Enable timely independent analysis & produce insights to inform policy
- Provide models of collaborative analytics and engagement with patients and public and capability to use data & analytics

# NDL Partners



Data	Imperial College Health Partners	Wales (Public Health Wales, NHS Wales Informatics Service NWIS, Social Care Wales & SAIL Databank)	Liverpool & Health Wirral Partnership	NHS Grampian and University of Aberdeen	Leeds City Council
Primary care					
GP contacts	✓	✓	✓		✓
Prescriptions	✓	✓	✓	✓	✓
Secondary care					
A&E	✓	✓	✓	✓	✓
Outpatient	✓	✓	✓	✓	✓
Inpatients	✓	✓	✓	✓	✓
Specialist Mental Health	✓	✓	✓	✓	✓
Social care					
Adult social care	✓		✓	✓	✓
Children's social care		✓		✓	
Community care	✓	✓		✓	✓
Other					
	Electronic frailty index	COVID-19 linked data	Citizens Advice Bureau	Maternity	Community beds
	Vulnerable patient watch lists	Survey data	Infant mortality risk	Cancer	
	High cost drugs	Specialist services and screening data	Complex lives	Aberdeen children of the 1950s	
	Asthma radar	Electronic frailty index and care homes		GenScotland	
	Patient capacity to self-care	<a href="#">Other datasets in SAIL</a>			

# NDL Information Flow: Federated approach



# More Information

**Website:**

<https://www.health.org.uk/funding-and-partnerships/the-networked-data-lab>

**Email:**

[ndl@health.org.uk](mailto:ndl@health.org.uk)